

WideTEK 48

For demanding applications
in a wide range of markets:

- Cartography and GIS,
- Architecture, Topography,
- Engineering,
- Construction, CAD
- Copy Services,
- Reprographics,



**Fast, high performance wide format color scanner
for high resolution scans up to 48 inches (1220 mm) in width**

- 12 m²/minute continuous scanning
- 1200 x 600 dpi true optical resolution
- User friendly touch screen
- Network scanning via web browser
- Integrated walk-up scanning software
- Scan to FTP, SMB, USB, eMail
- LED lamps, no warm-up, IR/UV free

WideTEK 48

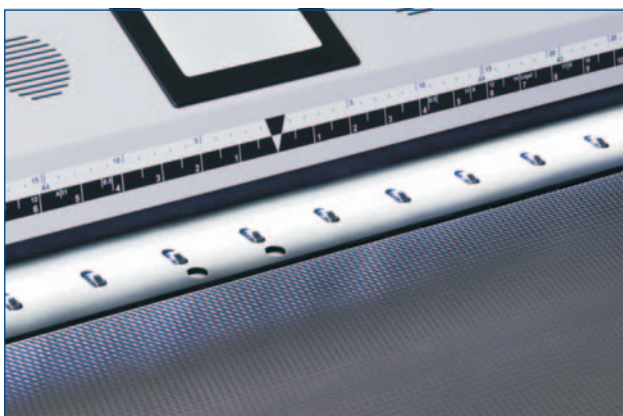
The wide format color scanner for documents up to 48 inches in width (1220 mm)

The innovative wide format scanner WideTEK 48 for documents up to 48 inches wide (1220 mm) is setting new standards in performance and quality.

This very fast but astonishingly quiet 48" color scanner combines user-friendliness, production-ready design and compact dimensions in a new class of scanners.

State of the art illumination using bright white LEDs guarantees long lifetime and best scan results at a very low noise level in spite of the high speed.

The cutting edge camera technology, consisting of a dust-protected, hermetically sealed camera box holding four CCD systems, delivers an optical resolution of 1200 x 600 dpi.



Ball bearings for safe and gentle document transport

Special transport rollers with individually spring loaded ball bearing pairs serving as pressure points ensure the best possible, gentle document transport. This allows a maximum document thickness of 3mm. A new weight-balanced back plate allows users to adjust the strength with which the documents are lifted to the scan plane.

Automatic document size recognition allows operators to pass sensitive documents through the middle of the scan area, protecting documents from any damage.

The exceptionally high scanning speed, dust-protected and encapsulated optical components and the absence of consumables characterize this highly efficient production-ready device. With a life expectancy of over one million scans, the WideTEK 48 redefines the price/performance ratio in the wide format scanner market.



The new wide format scanner WideTEK 48

This very compact device is outfitted with a touch screen and integrated walk-up scanning software. The Scan2Net® technology from Image Access forms the basis of the innovative user interface: intuitive to use via web browser or touch screen, providing the operator with direct control over practically every scanner function. Using the touch screen display, up to 30 different (password protected) jobs can be defined and stored. This allows operators to create and store templates and choose any predefined location on one of the network drives as a target for the scanned images.

The integrated walk-up scanning software makes the scanner a truly shared device. It allows the user to scan and send images to a specific destination such as a network printer, any directory in the network, or to a USB stick; without having to work with a client PC. Simply walk up, scan and store or send the image, all through the use of the touch screen.



Walk up scanning to USB stick



Integrated Scan Technology from Image Access



Scan2Net® scanners are operating system independent and require no additional hard- or software.

Integration

All Scan2Net® devices are integrated in an existing network using the standard TCP/IP protocol. A 1 Gbit network connection is recommended.

The scanned documents can be saved as JPEG, PNM, uncompressed TIFF, TIFF G4 and optionally in PDF format. One click of the mouse is enough to either print the scan or copy it, send it directly via eMail or save it to a USB Stick or an FTP server.

The innovative Scan2Net® technology forms the basis of the scanning solutions from Image Access.

Scanners operating with this technology require only a network connection and can be operated using any web browser, completely operating system independent.

The Scan2Net® technology utilizes an HTML-based user interface.

The Scan2Net® User Interface enables:

- Simple network integration of the scanner
- Operation of any Scan2Net® device
- Real time display of scanned images
- Easy installation of software updates
- Installation of software options

Simple, intuitive operation

It begins with the easy integration of the device in the network, no driver installation, no add-on cards. An IP address can be quickly assigned. Scan2Net® devices are readily available for every user in your network!

Clear Menu Structure

The menu, divided into five major functional areas, will quickly lead you to the desired result. Select the format and document structure, choose an output and color mode, press the start button and scan.

All parameters are configurable using only a few clear menu selections. Operation of the device becomes routine for first-time users in a very short time.

Minimum requirements for Scan2Net®:

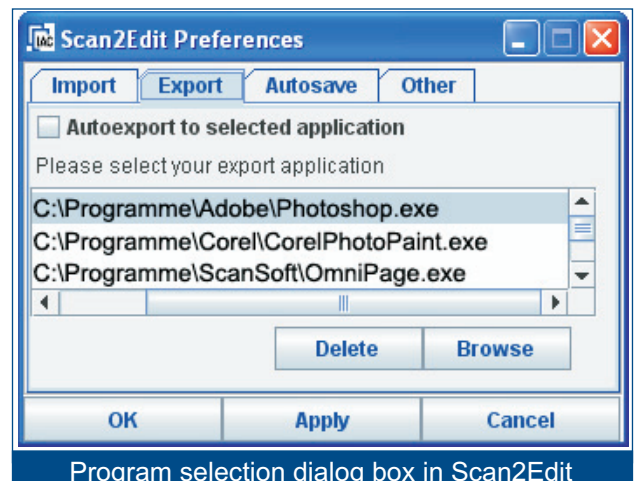
- TCP/IP Network or PC with network connection
- Standard web browser



Scanning and image processing in a single step

The new software Scan2Edit gives users the flexibility of scanning directly into their preferred image enhancement or graphics software applications. Click through the tabbed parameter pages to set all scanning parameters and preferences. It's just as simple to select the preferred application to which you will scan. Dynamically, the scanning parameter options change in the Scan2Edit application, depending on which Scan2Net® scanner is being used.

Scan2Edit enables the operator to scan source materials directly into their preferred graphics application (such as Adobe Photoshop, Corel Draw, Omnipage, etc.) and to modify the scanned image without rescanning by changing selected scan parameters. This reduces postprocessing to a minimum.



Production software for large quantities of source documents

Batch Scan Wizard gives the operator the benefit of simple and easy to configure templates. Using the ScanPad tool, a previously scanned document can be modified and the resulting image quality improved without having to rescan. The ScanTool enables operators to predefine specific areas of a document to extract and scan. In addition, user-definable hot keys can be configured to execute commonly used functions and workflows with the press of a single key. When the desired scan result is achieved, the operator selects the function Finalize to save the image to their predefined location and format.



Technical Data

Document formats	Autoformat Size Recognition ISO/DIN A5 to ISO/DIN A0 US ANSI formats (legal ... US E) User-defined formats Up to 48 x 18000 inches
Scan Width	Up to 48 inches (1220 mm)
Document Width	Up to 50 inches (1270 mm)
Document Thickness	Up to 3 mm
Optical Resolution	1200 x 600 dpi
Scan/Transport Speed (24 Bit Color)	1200 x 1200 dpi 0,7 inch/s (1,1 m/minute) 600 x 600 dpi 1,4 inch/s (2,2 m/minute) 300 x 300 dpi 5,6 inch/s (8,6 m/minute) 150 x 150 dpi 8,3 inch/s (12,6 m/minute)
Scan Length (at 42 inches width and 150 dpi resolution)	29 m in 24bit color depth, 400 m bitonal
Color Depth	36bit color, 12bit grayscale
Scan Output	24bit color, 8bit grayscale, bitonal, photo mode
File Formats	JPEG, PNM, TIFF decompressed, TIFF G4 (CCITT), PDF (optional)
Interface	1 GBit Fast Ethernet with TCP/IP based Scan2Net [®] Interface
Camera	4 x CCD Camera, 91200 Pixel, dust-free, hermetically sealed housing
Light Source	White LEDs, no UV-/IR-emission
Dimensions (H x W x D)	42 x 55 x 22 inches (1070 x 1399 x 555 mm)
Weight	approx. 160 lbs. (72 kg)
Electrical Connection	100 - 240 V AC, 50/60 Hz
Power Consumption	6 W (Stand-by) / 115 W (Ready to scan) / 210 W (Scanning)
Environment Details	
Temperature	+5 bis +40 °C
Relative Humidity	20 bis 80 % (non-condensed)
Noise Levels	35 dbA (Operation) / 25 dbA (Stand-by)
Software Options	PDF Generator, Batch Scan Wizard, Scan2Edit, Scan2USB, Scan2VGA
Functions	Digital color balance, Automatic black value correction, Automatic white balance Online ICC profiling, Web based firmware updates
	The device is fully RoHS and ENERGY STAR [®] compliant.

Image Access GmbH
Hatzfelder Str. 161 - 163
42281 Wuppertal, Germany
Fon +49 202 27058-0
Fax +49 202 27058-40
info@imageaccess.de
www.imageaccess.de
www.scan2net.de

Image Access, Inc.
543 NW 77th Street
Boca Raton, FL, USA 33 487
Fon +1 561 995-8334
Fax +1 561 995-8036
sales@imageaccess.com
www.imageaccess.com



is registered trademark of Image Access GmbH.
Subject to technical changes, alterations and modifications without prior notice.

© Image Access GmbH 2008
WideTEK 36-E-0-5208

