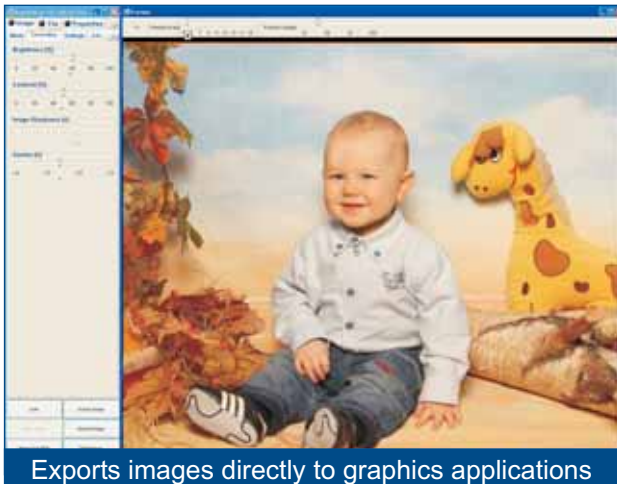




## Scanning and Image Processing in a Single Step



Exports images directly to graphics applications

- Direct export to a preferred graphics application without any additional driver software
- Modifies images without rescanning - simply by changing selected scan parameters
- Compatible with all common graphics applications

Using the Scan2EDIT software, the operator exports the scanned images directly into the preferred image enhancement or graphics software applications (such as Adobe Photoshop, Corel Draw, Omnipage, etc.). Click through the tabbed parameter pages to set all scanning parameters and preferences. It's just as simple to select the application to which you will scan.

Scanning of the source materials directly into the graphics application saves user time. Automatically saving documents in a predefined network location increases document throughput. Additionally, Scan2EDIT enables users to modify the scanned image without rescanning, simply by changing selected scan parameters.

## Scan2EDIT: Software Bridge to Graphics Application

The software utilizes the broad set of functionality available in Scan2Net® scanners such as the creation of multiple PDF files, scanning in color, grayscale and binary in a variety of image formats, automatic crop and deskew of the source document as well as image enhancement through software, with a large number of selectable parameters. Scan2EDIT reduces postprocessing to a minimum.


Scan2EDIT enhances and complements the Scan2Net® functionality. The software is free of charge and is available for download online in the Image Access **Customer Service Portal**.



The software with wide range of functions

Image Access GmbH  
Hatzfelder Str. 161 - 163  
42281 Wuppertal, Germany  
www.imageaccess.de

Image Access, Inc.  
543 NW 77th Street  
Boca Raton, FL, USA 33 487  
www.imageaccess.com

 Scan2Net® is registered trademark of Image Access. Subject to technical changes, alterations and modifications without prior notice.

© Image Access 2009  
Scan2EDIT\_E\_0.5-0209

