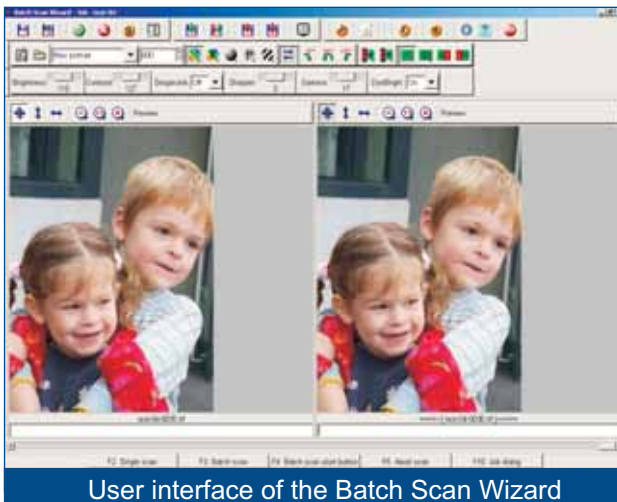




## Scan2Net® Software For Large Quantities of Source Documents

- Automated scanning of high volume documents
- Easy configuration with templates
- Hotkeys - frequently used operations at the press of a key
- ScanTool - free choice of image sections
- Time saving, high data throughput



User interface of the Batch Scan Wizard

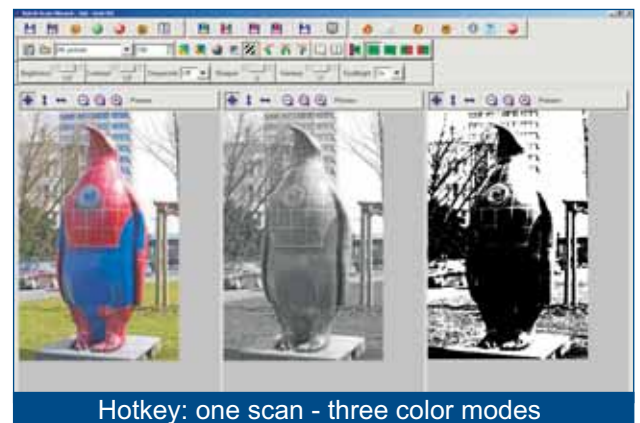
The Batch Scan Wizard enables the user to automate scanning large quantities of documents. The software expedites the data throughput and reduces operational tasks substantially. A batch is started either using the **foot pedal** or the user interface of the Batch Scan Wizard.

The operator creates **jobs** and configures **templates**. In addition to the standard scan parameters like brightness, contrast, color mode or file format; the Batch Scan Wizard offers further functions. **ScanTool** enables operators to predefine specific areas of a document to extract, scan and save as separate images. A previously scanned document can be modified and the resulting image quality improved without having to rescan.

## Batch Scan Wizard: Less Operational Tasks - High Document Throughput

**PageSplitting** enables variable splitting of the scanned page. The operator can configure frequently used functions and operations on **hotkeys** and activate them with the single press of a key. Even complex operations can be configured for hotkeys. For example, Batch Scan Wizard enables the operator to create several scans in different color modes (i.e., in color, greyscale and bitonal modes) all at the same time.

The Batch Scan Wizard enhances and complements the Scan2Net® functionality. The software is available for purchase and for download online in the Image Access **Customer Service Portal**.



Hotkey: one scan - three color modes